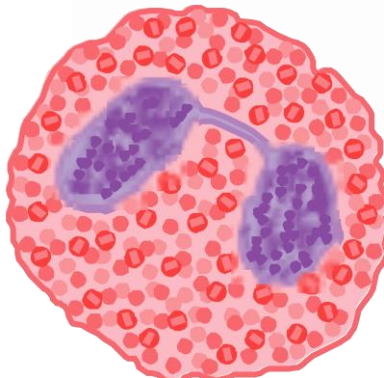


Isolation & Methods for Analysis of Siglec-Mediated Immune Responses in Human and Mouse Eosinophils

Skills Development Training Workshop
Division of Allergy-Immunology
Chicago, IL

JULY 22-24, 2016



Experimental Skills presented by -

Dr. Bruce Bochner
Dr. Jeremy O' Sullivan
Daniela Janevska
Dr. Liliana Moreno
Yun Cao

2016 LIDPEG-Northwestern Training Workshop Chicago, IL

Northwestern University, Feinberg School of Medicine, Division of Allergy-Immunology, Chicago, IL - Training Site, July22-24, 2016

Group 1: Anabel, David, Shiteng and Zi

Group 2: Ryan, Simone, Corwin and Zhoufeng

Internet on Site:

NMHGUEST that anyone can sign into

Day	Time	Group 1: Anabel, David, Shiteng and Zi	Group 2: Ryan, Simone, Corwin and Zhoufeng	Notes
		Friday attendees: Bruce, Yun, Liliana, Jeremy, Daniela + trainees	Friday attendees: Bruce, Yun, Liliana, Jeremy, Daniela + trainees	
Friday	22-Jul	Arrive by 3pm	Arrive by 3pm	
	3:50pm	Congregate in street level hotel lobby; Bruce will greet and escort everyone to the lab		
	4pm	Welcome, groups, safety review and methods overviews	Welcome, groups, safety review and methods overviews	Will give overviews of each of the methods: safety, eos/neut isolation, Mouse bone marrow, mouse eos culture, internalization, ROS, apoptosis
	5:30pm -6:45pm	Pizza @ Gino's East	Pizza @ Gino's East	
Saturday	23-Jul	Saturday attendees: Bruce, Yun, Liliana, Jeremy, Daniela + trainees	Saturday attendees: Bruce, Yun, Liliana, Jeremy, Daniela + trainees	
	8:30am	Eos donor (180 mL; includes 20 mL for Yun to demo)		
	8:50am	Congregate in street level hotel lobby; Daniela will greet and escort everyone to the lab		Responsibility for hands-on session, protocols and brief ppt intro (color-coded)
	9am-12:30pm	Eosinophil and neutrophil purification of 80 mL blood Density gradient centrifugation, RBC hypotonic lysis CD16 negative/positive selection and put cells into culture Harvest stem cells from mouse femurs	Eosinophil and neutrophil purification of 80 mL blood Density gradient centrifugation, RBC hypotonic lysis CD16 negative/positive selection and put cells into culture Harvest stem cells from mouse femurs	Bruce Bochner Yun Cao Liliana Moreno (+ Yun and Daniela) Jeremy O'Sullivan Daniela Janevska
	12:30-1:30pm	Lunch (delivered) + Lecture: Allergic diseases	Lunch (delivered) + Lecture: Allergic diseases	
	1:30-5pm	Finish eosinophil and neutrophil isolation Determine purity and viability by cyto-spin Put cells into culture ± IL-5 and ± 2C4 for tomorrow's expts	Finish eosinophil and neutrophil isolation Determine purity and viability; put cells into culture Put cells into culture ± IL-5 and ± 2C4 for tomorrow's expts	
	6:15pm	Dinner @ Portillos	Dinner @ Portillos	http://www.portillos.com
	7:30-10pm	Millenium Park concert (FREE)	Millenium Park concert (FREE)	http://www.grantparkmusicfestival.com/2016-season/the-new-world-symphony
	10:15pm	Navy Pier fireworks (FREE)	Navy Pier fireworks (FREE)	https://fireworksinillinois.com/events/navy-pier/ Backup if bad weather: http://hqbeercade.com , River North location
Sunday	24-Jul	Sunday attendees: Bruce, Jeremy, Daniela + trainees	Sunday attendees: Bruce, Jeremy, Daniela + trainees	
	8:50am	Congregate in street level hotel lobby; Daniela will greet and escort everyone to the lab		
	9am-noon	Siglec-F vs Siglec-8 internalization on BM-derived mouse eos by flow cytometry	Siglec-8-mediated apoptosis and ROS generation by cultured eosinophils using flow cytometry	
	Noon-1pm	Lunch nearby	Lunch nearby	
	1-4pm	Siglec-8-mediated apoptosis and ROS generation by cultured eosinophils using flow cytometry	Siglec-F vs Siglec-8 internalization on BM-derived mouse eos by flow cytometry	
	4-5pm	Rap up		

Warwick Allerton Hotel Chicago
701 N. Michigan Ave.
Chicago, IL 60611

Lab location
240 E. Huron street, mezzanine level
Bruce's cell 410-925 1867